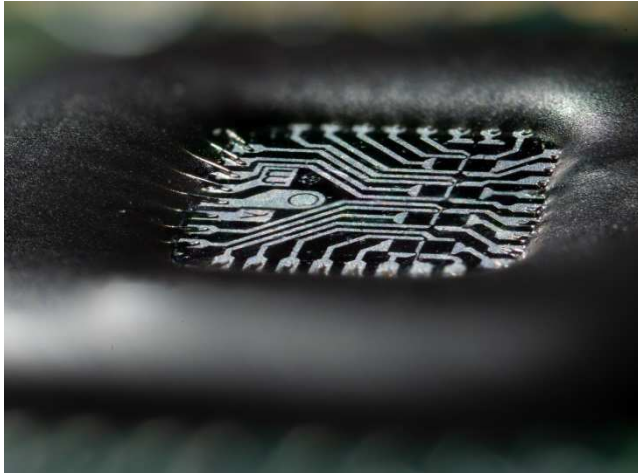


+++ NEW +++



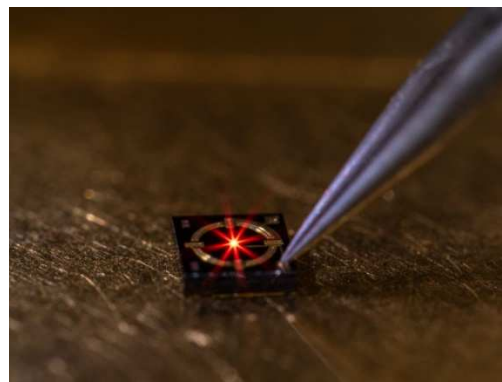
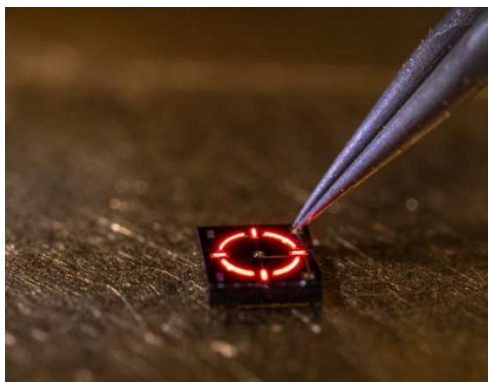
Monolithic Display Chips and Point Sources

Monolithic Display Chips for small optical systems enable to present numbers, letters and symbols for reticles in optical instruments.

Various and frequently changing information can be visualized in a very small area and each segment can be addressed separately.

The high efficiency red colour (630 nm) of these AlInGaP based chips can be activated at low currents with low power consumption, resulting in extended battery life in portable optical devices.

Point Source LED Chips are designed for illuminations with a parallel light beam, eliminating any obstruction and dark spots. Available wavelengths are **red (650nm)** and **infrared (850nm)** with apertures of emitting areas of $\varnothing 25\mu\text{m}$, $\varnothing 50\mu\text{m}$, $\varnothing 100\mu\text{m}$, $\varnothing 150\mu\text{m}$ or $\varnothing 200\mu\text{m}$.



Advantages

Monolithic Display Chips	Point Source LED Chips
High brilliance and contour sharpness	High reliability and long lifetime
Extremely long battery life for portable devices	High efficiency
Customized layouts available	Homogeneous illuminated area

Epigap Optronik GmbH
Koepenicker Str. 325
12555 Berlin, Germany

Tel. +49(0)30 6576 3760 / Fax: -3770
sales@epigap-optronic.de
www.epigap-optronic.de